



**For Release 2:00PM EDT
August 27, 2010**

RMI Corporation Partners with CCH
Monthly Sales Tax Updates Now Delivered Automatically

Avon, CT- August, 2010—RMI Corporation announced today that it has partnered with CCH, a Wolters Kluwer business to deliver Sales Tax rates automatically to RMI ADVANTAGE Cloud customers. This new partnership allows ADVANTAGE customers serving the United States and Canada to enjoy the benefits of automatically updated sales tax tables; saving them the time and stress of manual updates.

Sales tax regulations differ across taxing jurisdictions and are modified in one region or another nearly every month. Businesses with nexus in multiple states, jurisdictions with complex rate structures or in regions with frequent changes commonly find the task of managing sales tax rates to be especially challenging.

“RMI understands that managing sales tax is a complex task; one that is a business obligation rather than a strategic initiative to grow the business. This partnership with CCH is built on our mutual dedication to delivering the tools for accurate and timely sales tax reporting. Monthly sales tax updates from a renowned sales tax leader is yet another benefit that the ADVANTAGE Cloud package delivers to our customers.”

-David G. Richards, Vice President of Client Services
RMI Corporation

“CCH offers a robust portfolio of sales tax information and software solutions, and serves as a trusted provider of sales tax information to companies,

firms and government agencies nationwide, including the IRS,” said Product Manager Bruce Krumlauf. “We are committed to providing the most comprehensive, current sales tax information in ways that fit the operational and financial business models of cloud computing service providers and their customers. We’re very pleased to now partner with RMI to provide this critically important information to its clients.”

RMI is including this service as a standard part of their ADVANTAGE cloud offering. Customers currently operating in the ADVANTAGE Cloud will begin receiving this invaluable service the 1st of September with no change to their subscription fees.

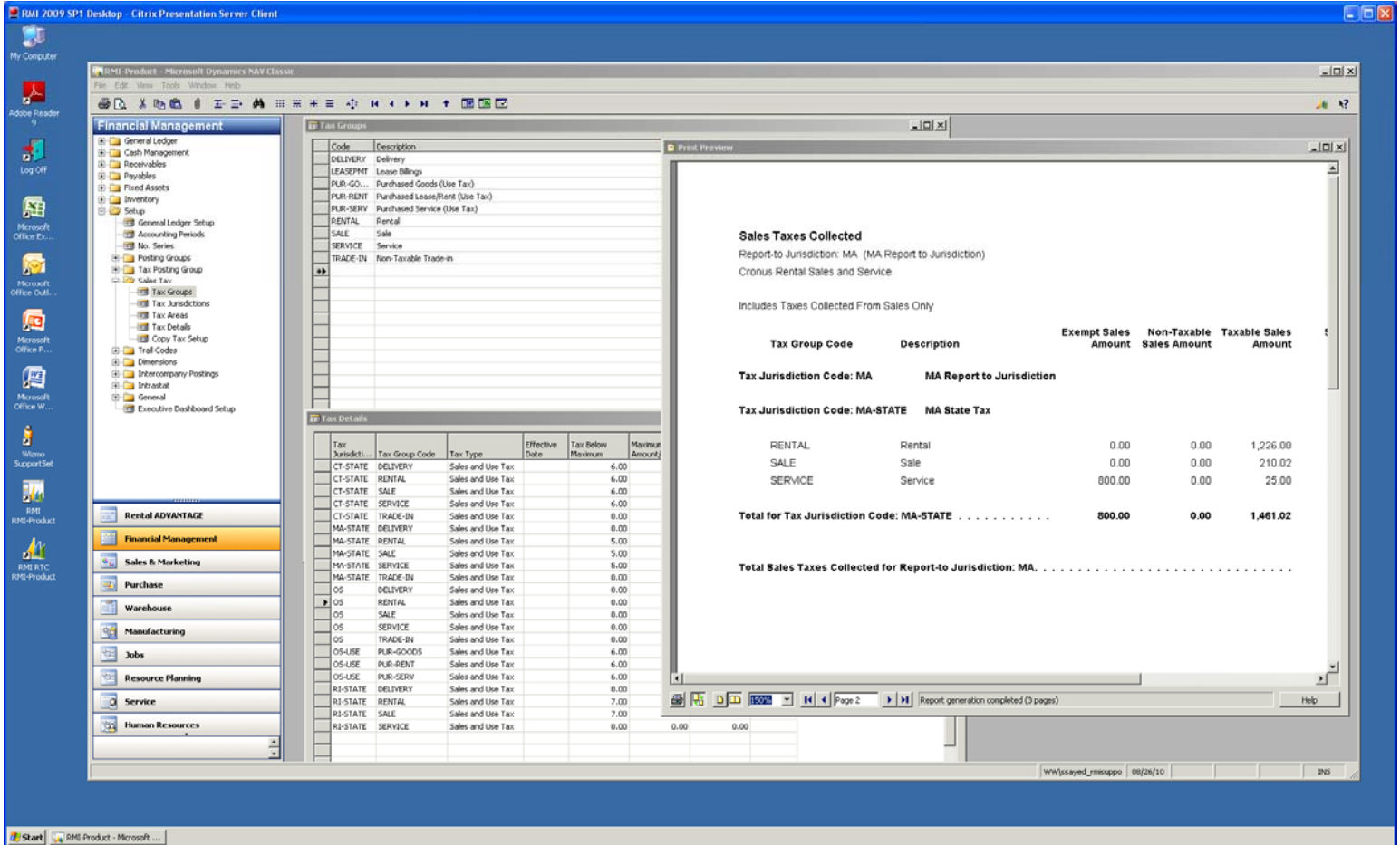
About CCH, a Wolters Kluwer business

CCH, a Wolters Kluwer business (CCHGroup.com) is the leading global provider of tax, accounting and audit information, software and services. It has served tax, accounting and business professionals since 1913. Among its market-leading solutions are The ProSystem fx® Suite, CorpSystem®, CCH® IntelliConnect®, Accounting Research Manager® and the U.S. Master Tax Guide®. CCH is based in Riverwoods, Ill. [Wolters Kluwer](http://WoltersKluwer.com) is a market-leading global information services company. Wolters Kluwer is headquartered in Alphen aan den Rijn, the Netherlands. Its shares are quoted on Euronext Amsterdam (WKL) and are included in the AEX and Euronext 100 indices.

About RMI Corporation

Founded in 1983 and headquartered in Avon, CT; RMI Corporation is the leader in Enterprise Rental, Sales and Service Solutions delivered on a SAAS model for mid-market companies. RMI is fully dedicated to the equipment rental, sales and service industry and offers an industry standard solution including software, implementation, training, data conversion, consultation and support to help their clients maximize efficiencies and reach their full business potential. RMI currently has thousands of users, representing various segments of the industry,

managing their business with ADVANTAGE. For more information on the ADVANTAGE Solution and RMI Corporation, please visit their website at www.rmiusa.com.



###

For additional information, press only:

Brittany L. Tripp

Marketing Specialist

RMI Corporation

40 Darling Drive

Avon, CT 06001

Phone: 860-677-1005 Ext. 429

BTripp@RMIUSA.com

Fax: 860-677-2454